

3

T O T T E N H A M
M E W S

F I T Z R O V I A , W 1

Luxurious.
Stylish.
Unique.

Contemporary living in the heart of Fitzrovia.

Nestled in a charming mews, 6 two-bedroom
and 2 one-bedroom stylish apartments
– a luxurious and unique setting in W1.

Available now.



The Building

Timeless. Exemplary. Classic.

Designed by RIBA Stirling Prize winner, AHMM Architects, the façade of 3 Tottenham Mews forms a contemporary tone for this classic setting.

Drawing on both its eclectic surroundings and the traditional mews style, the brickwork and painted metal provide a stylish and statement entrance into the luxury apartments.





Apartments

Indulgent. Opulent. Alluring.

From the bespoke Ted Todd herringbone oak floors throughout the apartments to specialist polished plaster walls in the master bathrooms, the apartments exude luxury as well as the ease of modern city living.

Exquisite fixtures and fittings fulfil the contemporary needs of everyday life, while creating a sumptuous cosy hideaway, juxtaposed against the lively neighbourhood on its doorstep.









Living Luxury

The open plan design with DeVOL Shaker Kitchen, Carrera marble worktops and backsplash, create a kitchen perfect for entertaining. The Livingroom features floor to ceiling Mews facing windows, with a Juliette balcony for the two-bedroom apartments and a terrace with bush hammered tiles for the one-bedroom, penthouse apartments.







Dreamy Delights

Dim the Rose Uniacke pendant lights and pick out a comfy outfit from the limes oak finish Dressing Room. Or take a plunge and relax in the Drummonds freestanding cast iron bath, surrounded by arabescato marble.

Specification

All the essential ingredients for luxury living

Kitchen

DeVOL Shaker kitchen
Carrera marble worktops and backsplash
Bespoke larder
Lacanche range cooker
Miele dishwasher, fridge/freezer, washer/dryer
Built in pantry by DeVOL (two-bedroom apartments only)

Living room

Floor to ceiling windows
Mews facing Juliet balcony (two-bedroom apartments)
Mews facing terrace (one-bedroom apartments)

Bathrooms

Drummonds free standing cast iron bath
Drummonds basin with arabescato marble
Drummonds taps, showers
The Watermonopoly - mirrors & electric heated towel rails
Matki - shower screens

Building Standards

BLP secure 10 year warranty

Floor & Wall Finishes

Ted Todd herringbone oak flooring throughout the apartments
Marble hexagonal mosaic tiles (master & guest bathroom)
Specialist polished plaster walls (master bathroom)
Glazed ceramic wall tiles (guest bathroom)
Bush hammered tiles (terrace)
Portland tiles from Stone Theatre in a diamond pattern with the Verde green tile border (entrance hall & lift)

Joinery

Bespoke built in bookshelf/media unit
Limed oak finish to dressing rooms
Traditionally detailed architraves and skirtings

Ironmongery

Internal door ironmongery - aged bronze finish by Corston
Front door ironmongery by Collier Webb

Security

CCTV
Video door entry system with smart app
Secure bicycle storage

Lift

Leather panelled walls
Bronze fittings
Specialist antiqued glass

Ground Floor Reception

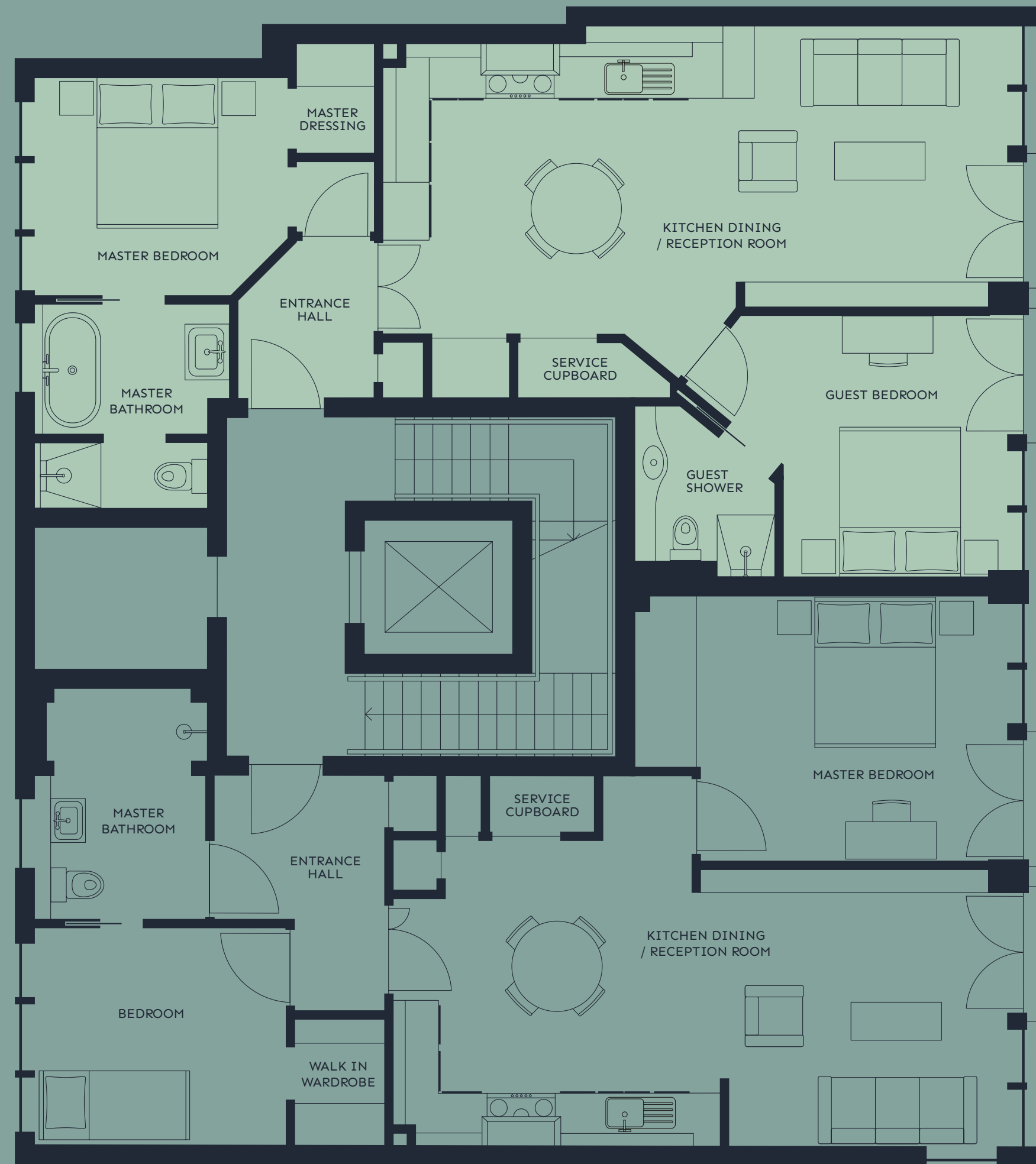
Feature lantern by Jamb
Wall lights by Matthew Cox and Jamb
Bespoke feature staircase handrail
Specialist paint finish to walls

Electric, Lighting, Heating

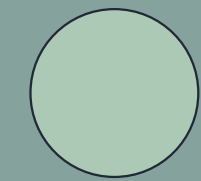
Underfloor heating with central heating system throughout
Comfort cooling with fresh air and extract ventilation system
Sprinkler protection system
Fibre broadband and high-speed WiFi
Cat 6 cabling
LG 4K Smart TVs in living and bedrooms with Sky, Sky+ & Sky Q
Switches and sockets by Forbes and Lomax
Feature kitchen pendant and master bedroom lighting by Rose Uniacke

Specification liable to variation and forms no part of any contract

Accommodation | First Floor



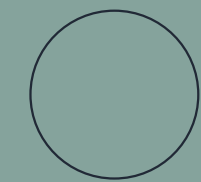
Tottenham Mews



Apartment 2

Two Bedroom | Two Bathrooms

Total Internal Area	810 sq. ft	75 sq. m
Kitchen / Living Room	27'7 x 15'5	8.4 x 4.7
Master Bedroom	15'11 x 9'5	4.9 x 2.9
Master Bathroom	8'1 x 7'10	2.7 x 2.4
Guest Bedroom	11'6 x 10'4	3.5 x 3.2
Guest Bathroom	7'11 x 5'11	2.4 x 1.8

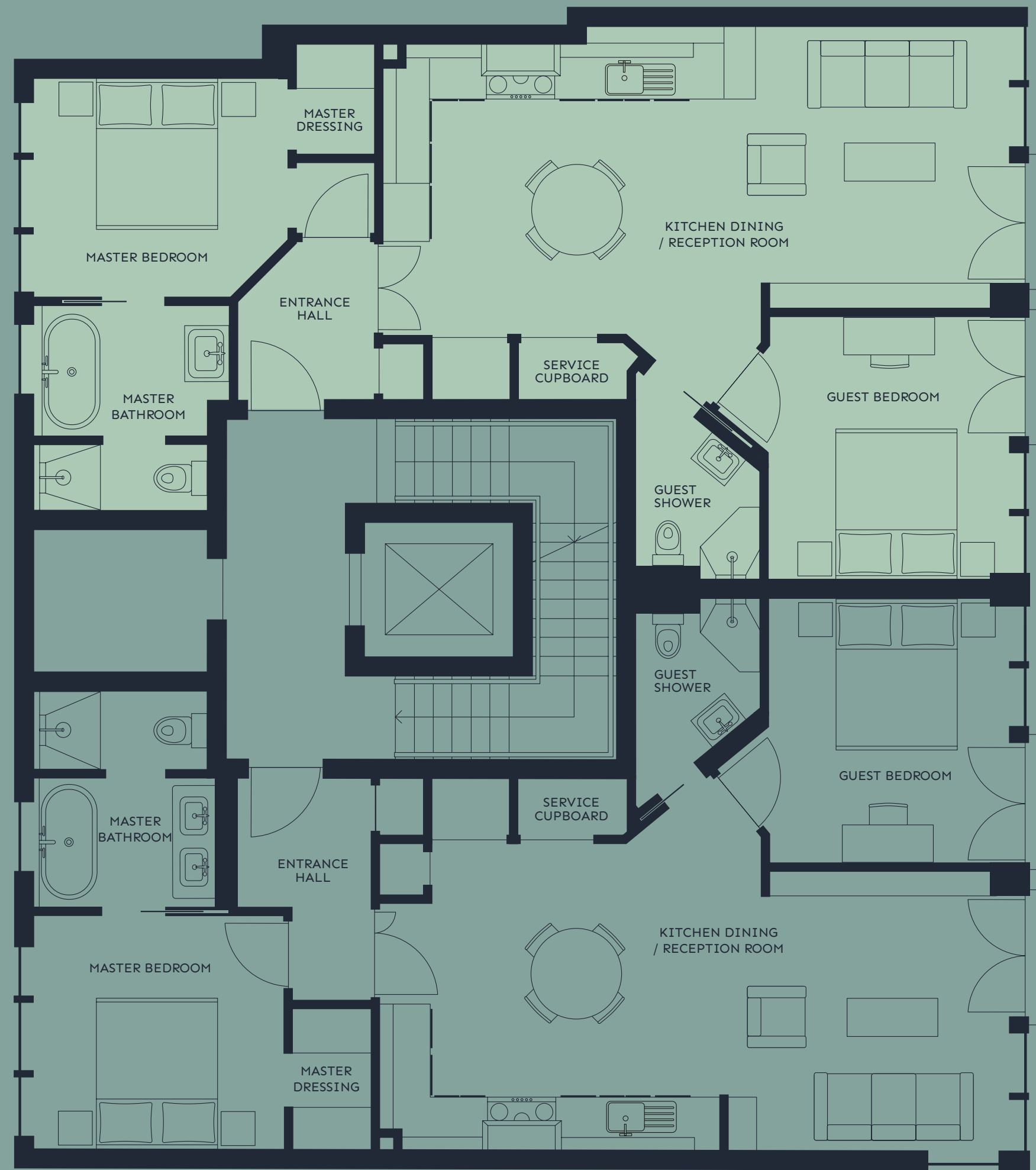


Apartment 1

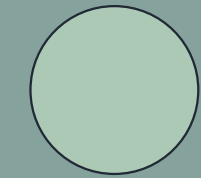
Two Bedroom | One Bathroom

Total Internal Area	826 sq. ft	77 sq. m
Kitchen / Living Room	27'4 x 16'1	8.3 x 4.9
Master Bedroom	16'10 x 11'6	5.1 x 3.5
Guest Bedroom	11'10 x 9'6	3.6 x 2.9
Bathroom	9'7 x 7'5	2.9 x 2.3

Accommodation | Second Floor



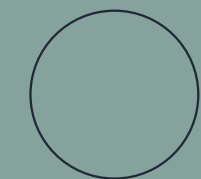
Tottenham Mews



Apartment 4

Two Bedroom | Two Bathrooms

Total Internal Area	810 sq. ft	75 sq. m
Kitchen / Living Room	27'9 x 15'5	8.5 x 4.7
Master Bedroom	15'9 x 9'6	4.8 x 2.9
Master Bathroom	8'10 x 7'8	2.7 x 2.3
Guest Bedroom	11'5 x 11'1	3.5 x 3.4
Guest Bathroom	9'4 x 5'5	2.9 x 1.7

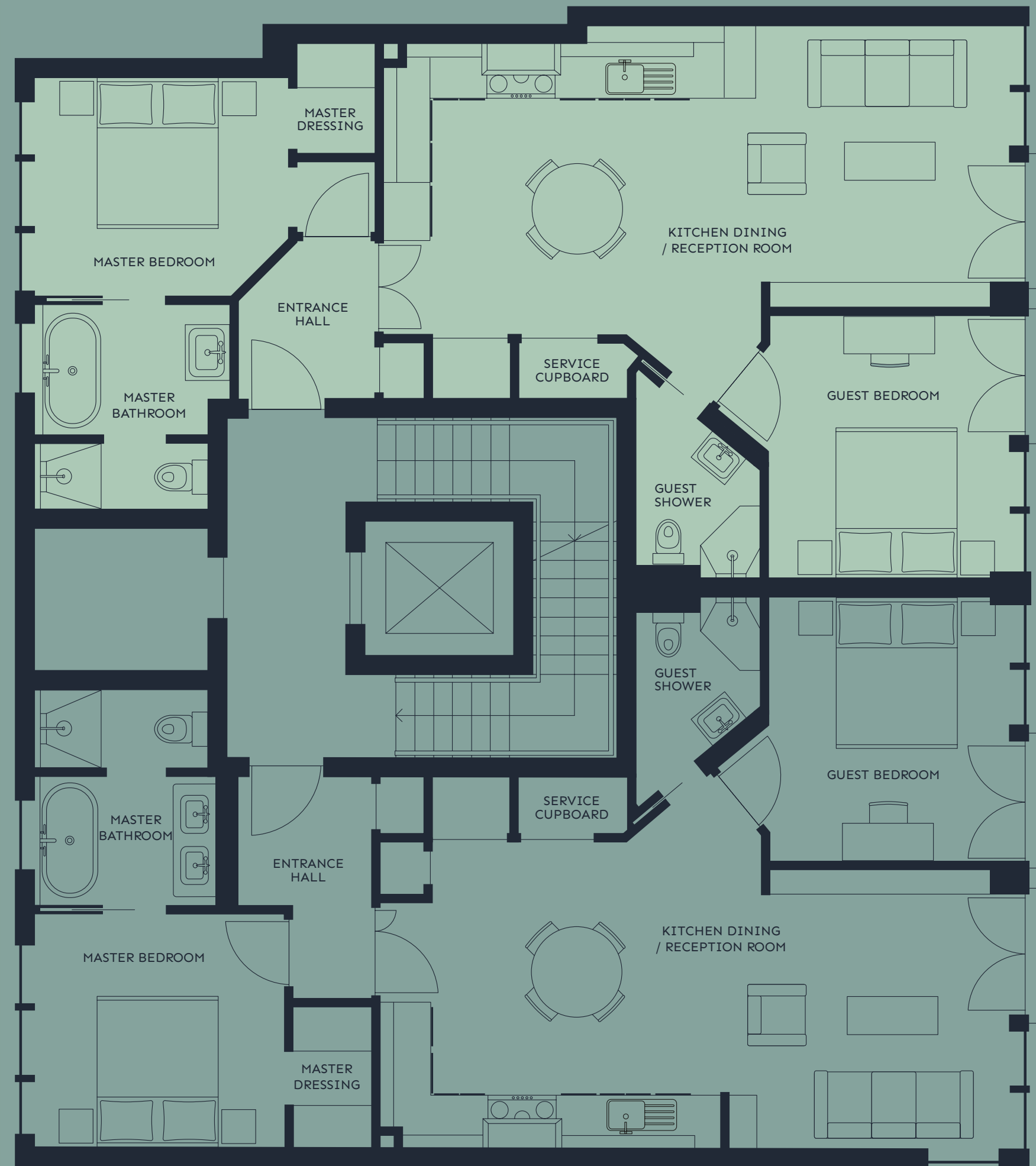


Apartment 3

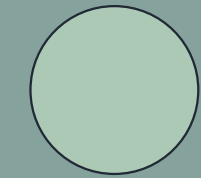
Two Bedroom | Two Bathrooms

Total Internal Area	835 sq. ft	78 sq. m
Kitchen / Living Room	28'0 x 16'1	8.5 x 4.9
Master Bedroom	11'6 x 10'2	3.5 x 3.1
Master Bathroom	7'9 x 8'9	2.4 x 2.7
Guest Bedroom	11'5 x 11'1	3.5 x 3.4
Guest Bathroom	9'5 x 5'6	2.9 x 1.7

Accommodation | Third Floor



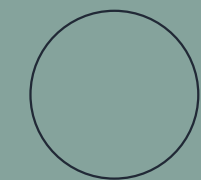
Tottenham Mews



Apartment 6

Two Bedroom | Two Bathrooms

Total Internal Area	810 sq. ft	75 sq. m
Kitchen / Living Room	27'8 x 15'4	8.4 x 4.7
Master Bedroom	15'9 x 9'6	4.8 x 2.9
Master Bathroom	8'9 x 7'8	2.7 x 2.3
Guest Bedroom	11'5 x 11'1	3.5 x 3.4
Guest Bathroom	9'4 x 5'5	2.9 x 1.7

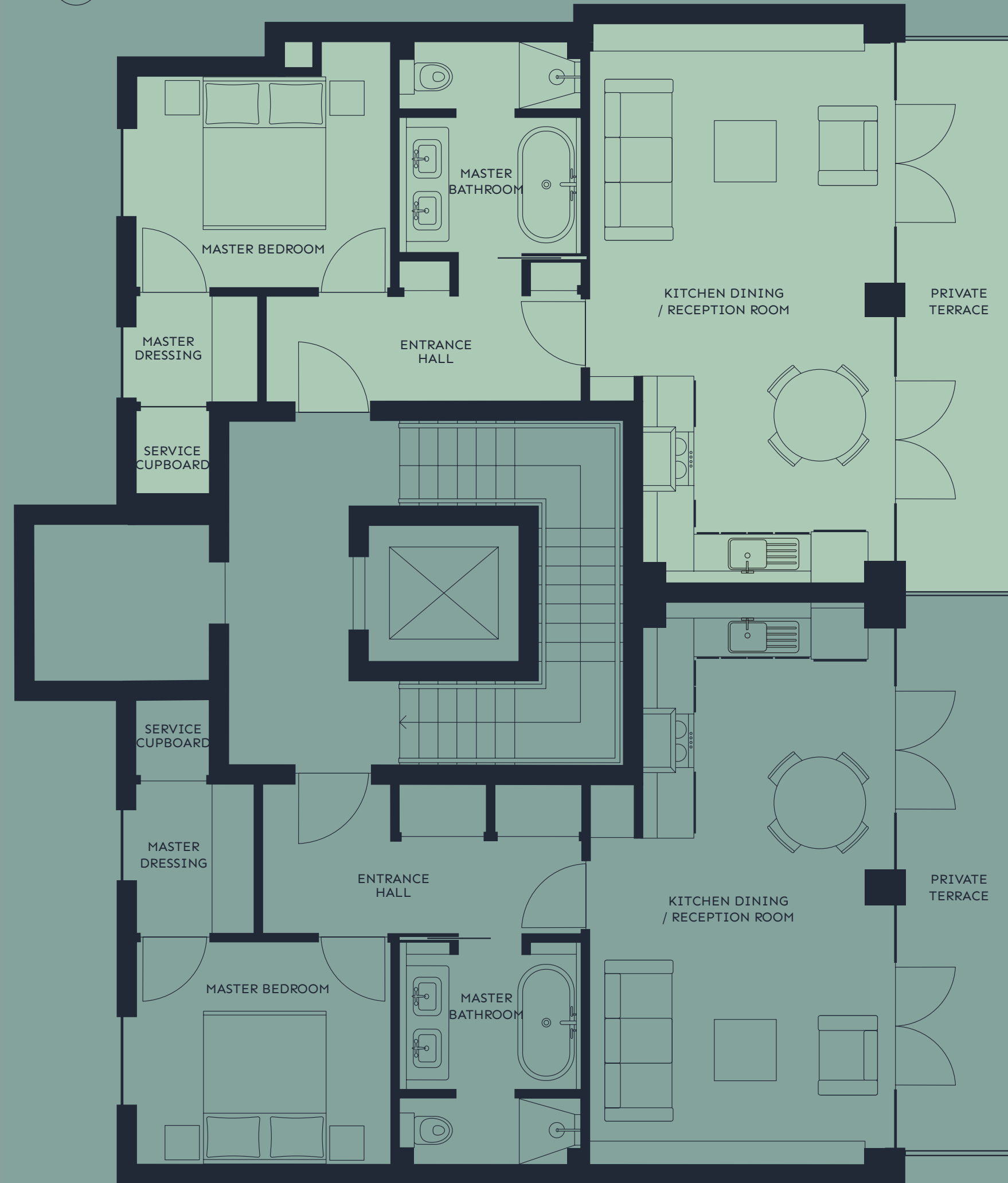


Apartment 5

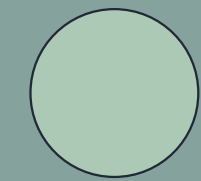
Two Bedroom | Two Bathrooms

Total Internal Area	835 sq. ft	78 sq. m
Kitchen / Living Room	28'0 x 16'1	8.5 x 4.9
Master Bedroom	11'6 x 10'2	3.5 x 3.1
Master Bathroom	9'4 x 7'7	2.8 x 2.3
Guest Bedroom	11'5 x 11'1	3.5 x 3.4
Guest Bathroom	9'4 x 5'5	2.8 x 1.7

Accommodation | Fourth Floor

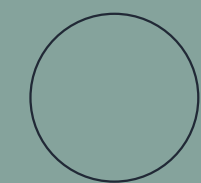


Tottenham Mews



Apartment 8
One Bedroom | One Bathroom

Total Internal Area	585 sq. ft	54 sq. m
Kitchen / Living Room	23'1 x 12'10	7.3 x 3.9
Master Bedroom	10'8 x 10'5	3.3 x 3.2
Bathroom	8'10 x 7'9	2.7 x 2.4
Private Terrace	23'11 x 5'3	7.3 x 1.6



Apartment 7
One Bedroom | One Bathroom

Total Internal Area	612 sq. ft	57 sq. m
Kitchen / Living Room	23'9 x 12'10	7.2 x 3.9
Master Bedroom	10'8 x 9'5	3.3 x 2.9
Bathroom	9'5 x 7'9	2.9 x 2.4
Private Terrace	23'11 x 5'3	7.3 x 1.6

The Neighbourhood

Vibrant. Central. Connected.

3 Tottenham Mews is nestled in the heart of Fitzrovia, just off the famed Charlotte Street.

A lively and fashionable neighbourhood, Fitzrovia has quickly become one of London's signature dining locations and boasts a collection of luxury hotels, chic cafés and stylish bars. With its rich and eclectic history, the beautiful residential street creates a village haven away from the bright lights of nearby Soho and Covent Garden.





The Neighbourhood



Restaurants

1. Mere
2. The Ninth
3. Berners Tavern
4. Pied A Terre
5. ROKA Charlotte Street
6. Lisboaeta
7. Circolo Popolare
8. Lima Fitzrovia
9. Norma

Attractions

1. The British Museum
2. The Wallace Collection

Hotels

1. Charlotte Street Hotel
2. The Langham
3. The Mandrake

Village charm

With 14 bicycle units, residents can explore the central surroundings, just minutes away from the very best shopping, cuisine and cultural delights that London has to offer. Or jump on the tube at Tottenham Court Road for Crossrail and Central Line, Goodge Street for the Northern Line, and Warren Street for the Victoria line.

Contacts

Dedicated.
Knowledgeable.
Passionate.

Please get in touch with our agents
for any further information

020 7323 2277
sales@hudsonsproperty.com

020 7409 8756
newhomes@savills.com

